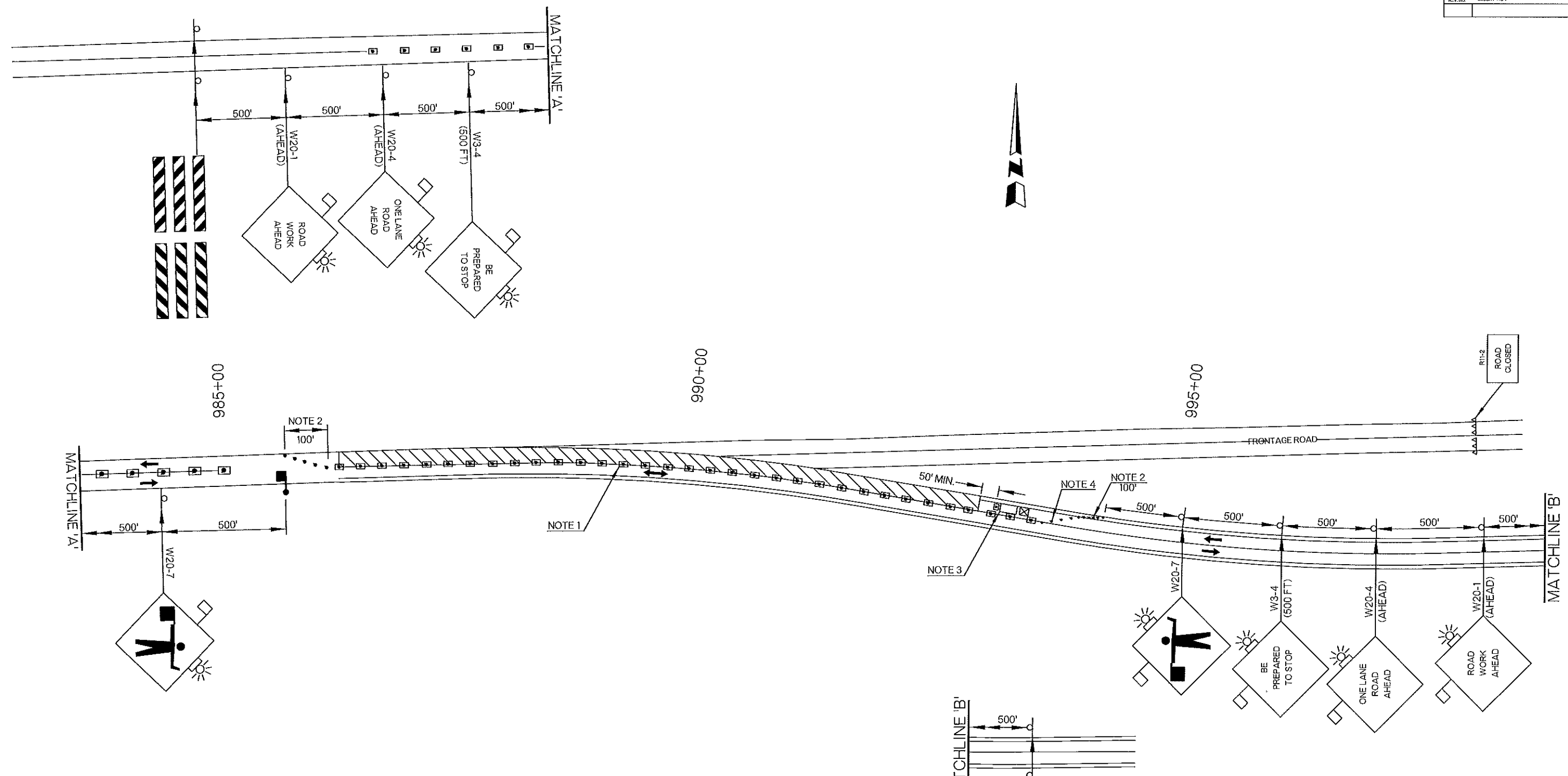


| REV. NO. | DESCRIPTION | REVISIONS | DATE |
|----------|-------------|-----------|------|
|          |             |           |      |



**NOTE 1**  
 MAXIMUM SPACING BETWEEN CHANNELIZING DEVICES (FEET) SHALL BE EQUAL TO TWICE THE POSTED SPEED LIMIT (M.P.H.) WITH THE FOLLOWING EXCEPTIONS. SPACING SHALL NOT EXCEED 50 FEET FOR CONES OR TUBE CHANNELIZERS. SPACING SHALL NOT EXCEED 75 FEET FOR CHANNELIZER CONES. SPACING SHALL NOT EXCEED 100 FEET FOR TYPE II BARRICADES, VERTICAL PANELS OR DRUMS.

**NOTE 2**  
 A MINIMUM OF FIVE (5) CHANNELIZING DEVICES SHALL BE PLACED THROUGH THIS TAPER.

**NOTE 3**  
 THE TRUCK MOUNTED ATTENUATOR SHOWN AT THE BEGINNING OF THE WORK AREA SHALL BE IN PLACE WHENEVER WORKERS ARE IN THE WORK AREA. THIS VEHICLE SHALL BE REMOVED FROM THE ROADWAY WHENEVER WORKERS ARE NOT IN THE WORK AREA. THIS VEHICLE SHALL BE EQUIPPED WITH AN ACTUATED FLASHING OR REVOLVING YELLOW LIGHT.

**NOTE 4**  
 MAXIMUM SPACING BETWEEN CHANNELIZING DEVICES (FEET) SHALL BE EQUAL TO THE POSTED SPEED LIMIT (M.P.H.) WITH THE FOLLOWING EXCEPTIONS. SPACING SHALL NOT EXCEED 25 FEET FOR CONES OR TUBE CHANNELIZERS. SPACING SHALL NOT EXCEED 50 FEET FOR TYPE II BARRICADES, VERTICAL PANELS OR DRUMS.

THE FLAGGERS SHALL BE IN SIGHT OF EACH OTHER OR IN DIRECT CONTACT AT ALL TIMES AND SHALL BE POSITIONED TO PROTECT THE WORKERS.

WHEN NO WORK IS BEING PERFORMED AND TWO LANE TRAFFIC IS OPERATING, FLAGGERS WILL NOT BE REQUIRED. WHENEVER FLAGGERS ARE NOT PRESENT, THE 'FLAGGER' SIGNS SHALL BE REMOVED OR COVERED.

FLOODLIGHTS SHOULD BE PROVIDED FROM FLAGGER STATIONS AT NIGHT AS NEEDED.

IN INSTANCES WHERE SIGHT DISTANCE MAY BE RESTRICTED DUE TO A CREST VERTICAL CURVE, HORIZONTAL CURVE OR OTHER FACTORS, THE CHANNELIZING DEVICES ARE TO BE EXTENDED TO A POINT WHERE THEY ARE VISIBLE TO APPROACHING TRAFFIC.

FOR ADDITIONAL INFORMATION ABOUT TAPER LENGTHS AND SPACING OF CHANNELIZING DEVICES, SEE STANDARD DRAWING TCS2-1 (LATEST REVISION).

- KEY:**
- SIGN
  - DRUM
  - WORK AREA
  - TYPE III BARRICADE
  - CHANNELIZER CONE
  - TRUCK MOUNTED ATTENUATOR
  - FLAGGER

DRAWING NOT TO SCALE

|                               |     |                              |                                   |
|-------------------------------|-----|------------------------------|-----------------------------------|
| <b>TRAFFIC CONTROL DETAIL</b> |     |                              |                                   |
| <b>PHASE 6</b>                |     |                              |                                   |
| Drawn                         | RGN | 2/16                         | TRAFFIC ENGINEERING<br>JAMI SHORT |
| Design                        | RGN | 2/16                         |                                   |
| Checked                       | JLS | 2/16                         |                                   |
| STATE OF OKLAHOMA             |     | DEPARTMENT OF TRANSPORTATION |                                   |
| DIVISION 1                    |     | ESTATE JOB NO. 27952(04)     |                                   |
| SHEET NO. 84                  |     | MUSKOGEE COUNTY US-62        |                                   |